

SIGLEC8 Antibody



PACO01979

Product Information

Size:

50ug

Reactivity:

Human

Source:

Rabbit

Isotype:

IgG

Applications:

ELISA, WB

Recommended dilutions:

WB:1:500-1:2000

Protein Background:**Gene ID:**

SIGLEC8

Uniprot

Q9NYZ4

Synonyms:

SIGLEC8; SAF2; Sialic acid-binding Ig-like lectin 8; Siglec-8; CDw329; Sialoadhesin family member 2; SAF-2; CD329

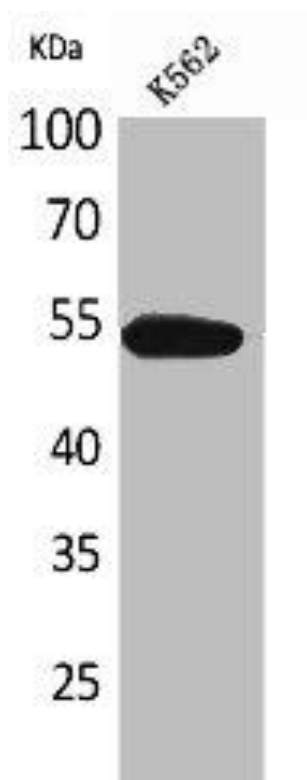
Immunogen:

Synthesized peptide derived from the Internal region of human CD329.

Storage:

Liquid in PBS containing 50% glycerol, 0.5% BSA and 0.02% sodium azide.

Product Images



Western Blot analysis of K562 cells using CD329 Polyclonal Antibody.