

FZD10 Antibody



PACO01981

Product Information

Size:

50ug

Reactivity:

Human, Mouse

Source:

Rabbit

Isotype:

IgG

Applications:

ELISA, WB

Recommended dilutions:

WB:1:500-1:2000

Protein Background:**Gene ID:**

FZD10

Uniprot

Q9ULW2

Synonyms:

FZD10; Frizzled-10; Fz-10; hFz10; FzE7; CD350

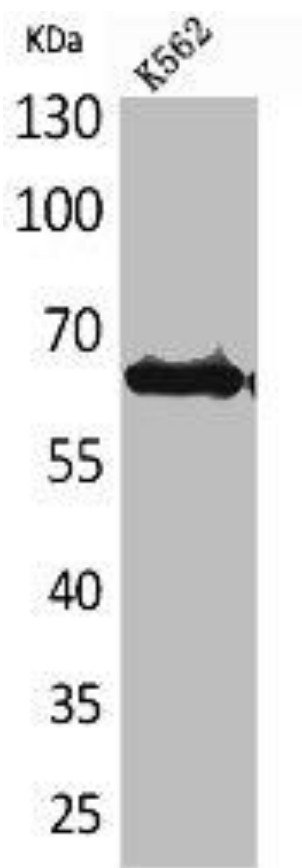
Immunogen:

Synthesized peptide derived from the N-terminal region of human Frizzled-10.

Storage:

Liquid in PBS containing 50% glycerol, 0.5% BSA and 0.02% sodium azide.

Product Images



Western Blot analysis of K562 cells using Frizzled-10 Polyclonal Antibody.