

LEPR Antibody



PACO01983

Product Information

Size:

50ug

Reactivity:

Human

Source:

Rabbit

Isotype:

IgG

Applications:

ELISA, WB

Recommended dilutions:

WB:1:500-1:2000

Protein Background:

Gene ID:

LEPR

Uniprot

P48357

Synonyms:

LEPR; DB; OBR; Leptin receptor; LEP-R; HuB219; OB receptor; OB-R; CD295

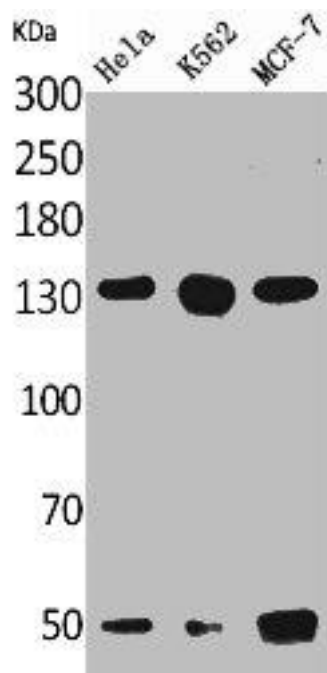
Immunogen:

Synthesized peptide derived from the Internal region of human Ob-R.

Storage:

Liquid in PBS containing 50% glycerol, 0.5% BSA and 0.02% sodium azide.

Product Images



Western Blot analysis of HeLa K562 MCF7 cells using Ob-R Polyclonal Antibody.