

CD276 Antibody



PACO01986

Product Information

Size:

50ug

Reactivity:

Human, Mouse, Rat

Source:

Rabbit

Isotype:

IgG

Applications:

ELISA, WB

Recommended dilutions:

WB:1:500-1:2000

Protein Background:**Gene ID:**

CD276

Uniprot

Q5ZPR3

Synonyms:

CD276; B7H3; PSEC0249; CD276 antigen; 4lg-B7-H3; B7 homolog 3; B7-H3; Costimulatory molecule; CD276

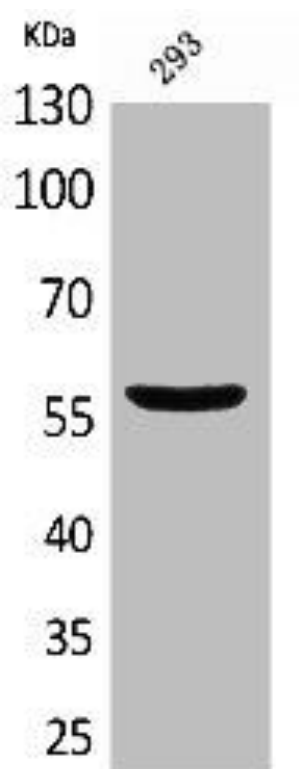
Immunogen:

Synthesized peptide derived from the Internal region of human CD276.

Storage:

Liquid in PBS containing 50% glycerol, 0.5% BSA and 0.02% sodium azide.

Product Images



Western Blot analysis of 293 cells using CD276 Polyclonal Antibody.