

PSPN Antibody



PACO01995

Product Information

Size:

50ug

Reactivity:

Human

Source:

Rabbit

Isotype:

IgG

Applications:

ELISA, WB

Recommended dilutions:

WB:1:500-1:2000

Protein Background:

Gene ID:

PSPN

Uniprot

O60542

Synonyms:

PSPN; Persephin; PSP

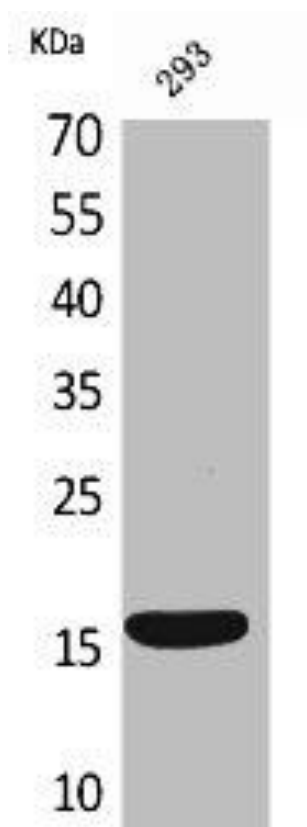
Immunogen:

Synthesized peptide derived from the C-terminal region of human PSP.

Storage:

Liquid in PBS containing 50% glycerol, 0.5% BSA and 0.02% sodium azide.

Product Images



Western Blot analysis of 293 cells using PSP Polyclonal Antibody.