

IFNE Antibody



PACO02004

Product Information

Size:

50ug

Reactivity:

Human

Source:

Rabbit

Isotype:

IgG

Applications:

ELISA, WB

Recommended dilutions:

WB:1:500-1:2000

Protein Background:

Gene ID:

IFNE

Uniprot

Q86WN2

Synonyms:

IFNE; IFNE1; Interferon epsilon; IFN-epsilon; Interferon epsilon-1

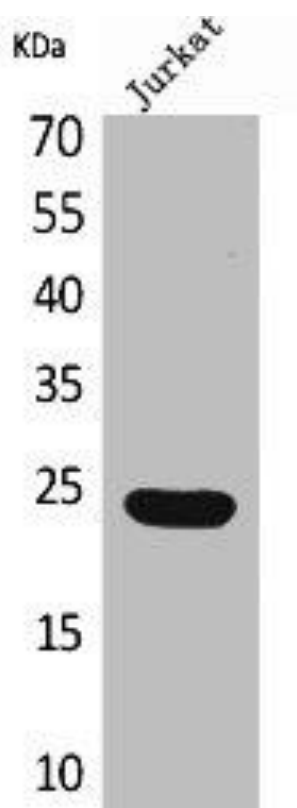
Immunogen:

Synthesized peptide derived from the C-terminal region of human IFN-epsilon.

Storage:

Liquid in PBS containing 50% glycerol, 0.5% BSA and 0.02% sodium azide.

Product Images



Western Blot analysis of Jurkat cells using IFN-epsilon Polyclonal Antibody.