

BMP8A Antibody



PACO02006

Product Information

Size:

50ug

Reactivity:

Human, Mouse, Rat

Source:

Rabbit

Isotype:

IgG

Applications:

ELISA, WB

Recommended dilutions:

WB:1:500-1:2000

Protein Background:

Gene ID:

BMP8A

Uniprot

Q7Z5Y6

Synonyms:

BMP8A; Bone morphogenetic protein 8A; BMP-8A

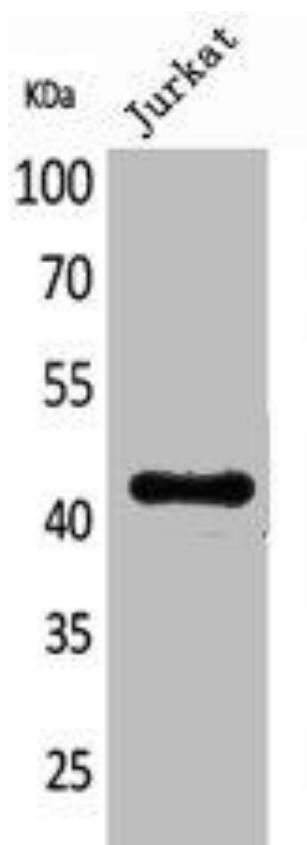
Immunogen:

Synthesized peptide derived from the Internal region of human BMP-8A.

Storage:

Liquid in PBS containing 50% glycerol, 0.5% BSA and 0.02% sodium azide.

Product Images



Western Blot analysis of Jurkat cells using BMP-8A Polyclonal Antibody.