

# PAX5 Antibody



PACO02010

---

## Product Information

**Size:**

50ug

**Reactivity:**

Human, Mouse

**Source:**

Rabbit

**Isotype:**

IgG

**Applications:**

ELISA, WB

**Recommended dilutions:**

WB:1:500-1:2000

**Protein Background:**

**Gene ID:**

PAX5

**Uniprot**

Q02548

**Synonyms:**

PAX5; Paired box protein Pax-5; B-cell-specific transcription factor; BSAP

**Immunogen:**

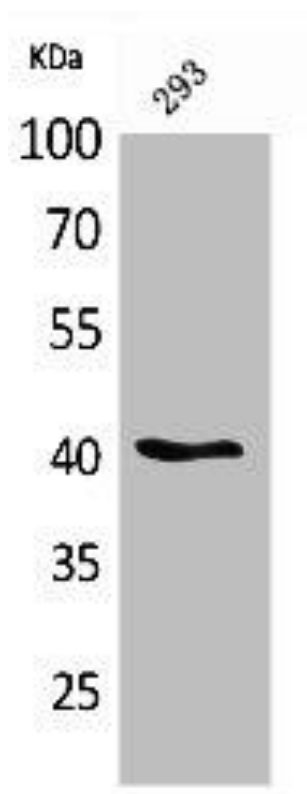
Synthesized peptide derived from the Internal region of human Pax-5.

**Storage:**

Liquid in PBS containing 50% glycerol, 0.5% BSA and 0.02% sodium azide.

## Product Images

---



Western Blot analysis of 293 cells using Pax-5 Polyclonal Antibody.