

BIN1 Antibody



PACO02014

Product Information

Size:

50ug

Reactivity:

Human, Mouse, Rat

Source:

Rabbit

Isotype:

IgG

Applications:

ELISA, WB

Recommended dilutions:

WB:1:500-1:2000

Protein Background:

Gene ID:

BIN1

Uniprot

O00499

Synonyms:

BIN1; AMPHL; Myc box-dependent-interacting protein 1; Amphiphysin II; Amphiphysin-like protein; Box-dependent myc-interacting protein 1; Bridging integrator 1

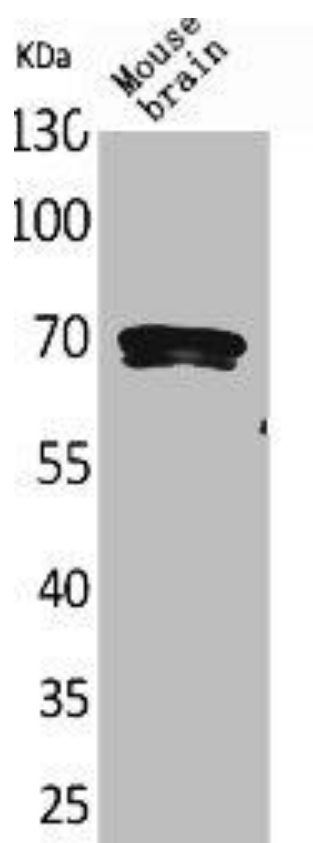
Immunogen:

Synthesized peptide derived from the C-terminal region of human Amphiphysin II.

Storage:

Liquid in PBS containing 50% glycerol, 0.5% BSA and 0.02% sodium azide.

Product Images



Western Blot analysis of mouse brain cells using Amphiphysin II Polyclonal Antibody.