

IDH3A Antibody



PACO02016

Product Information

Size:

50ug

Reactivity:

Human, Mouse, Rat

Source:

Rabbit

Isotype:

IgG

Applications:

ELISA, WB

Recommended dilutions:

WB:1:500-1:2000

Protein Background:

Gene ID:

IDH3A

Uniprot

P50213

Synonyms:

IDH3A; Isocitrate dehydrogenase [NAD] subunit alpha, mitochondrial; Isocitric dehydrogenase subunit alpha; NAD(+)-specific ICDH subunit alpha

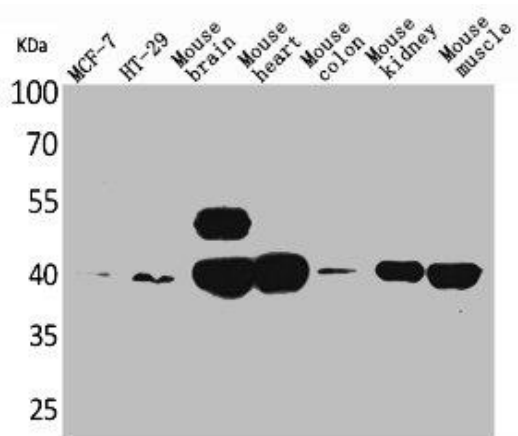
Immunogen:

Synthesized peptide derived from the Internal region of human IDH3A.

Storage:

Liquid in PBS containing 50% glycerol, 0.5% BSA and 0.02% sodium azide.

Product Images



Western Blot analysis of MCF-7 HT29 mouse brain mouse heart mouse colon mouse kidney mouse skeletal muscle cells using IDH3A Polyclonal Antibody.