

# KRT8 Antibody



PACO02024

---

## Product Information

**Size:**

50ug

**Reactivity:**

Human

**Source:**

Rabbit

**Isotype:**

IgG

**Applications:**

ELISA, WB

**Recommended dilutions:**

WB:1:500-1:2000

**Protein Background:**

**Gene ID:**

KRT8

**Uniprot**

P05787

**Synonyms:**

KRT8; CYK8; Keratin, type II cytoskeletal 8; Cytokeratin-8; CK-8; Keratin-8; K8; Type-II keratin Kb8

**Immunogen:**

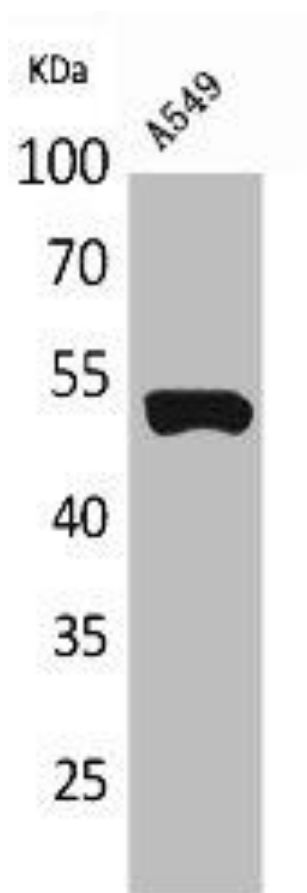
Synthesized peptide derived from human Cytokeratin 8 around the non-acetylation site of K483.

**Storage:**

Liquid in PBS containing 50% glycerol, 0.5% BSA and 0.02% sodium azide.

## Product Images

---



Western Blot analysis of A549 cells using Cytokeratin 8 Polyclonal Antibody.