

KRT19 Antibody



PACO02037

Product Information

Size:

50ug

Reactivity:

Human

Source:

Rabbit

Isotype:

IgG

Applications:

ELISA, WB

Recommended dilutions:

WB:1:500-1:2000

Protein Background:

Gene ID:

KRT19

Uniprot

P08727

Synonyms:

KRT19; Keratin, type I cytoskeletal 19; Cytokeratin-19; CK-19; Keratin-19; K19

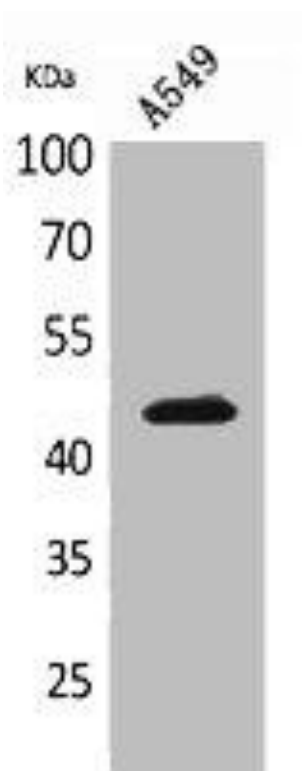
Immunogen:

Synthesized peptide derived from the C-terminal region of human Cytokeratin 19.

Storage:

Liquid in PBS containing 50% glycerol, 0.5% BSA and 0.02% sodium azide.

Product Images



Western Blot analysis of A549 cells using Cytokeratin 19 Polyclonal Antibody.