

# ALDH2 Antibody



PACO02043

---

## Product Information

**Size:**

50ug

**Reactivity:**

Human, Mouse, Rat

**Source:**

Rabbit

**Isotype:**

IgG

**Applications:**

ELISA, WB

**Recommended dilutions:**

WB:1:500-1:2000

**Protein Background:****Gene ID:**

ALDH2

**Uniprot**

P05091

**Synonyms:**

ALDH2; ALDM; Aldehyde dehydrogenase, mitochondrial; ALDH class 2; ALDH-E2; ALDHI

**Immunogen:**

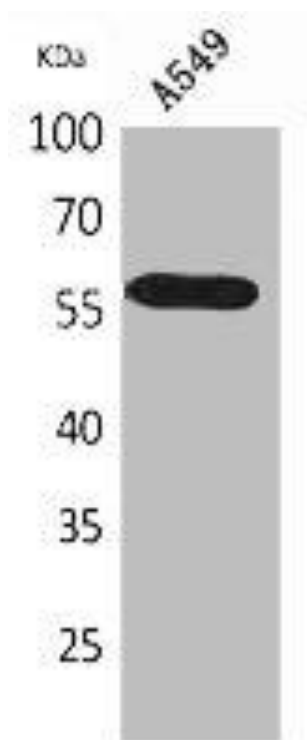
Synthesized peptide derived from the N-terminal region of human ALDH2.

**Storage:**

Liquid in PBS containing 50% glycerol, 0.5% BSA and 0.02% sodium azide.

## Product Images

---



Western Blot analysis of A549 cells using ALDH2 Polyclonal Antibody.