

SLC22A6 Antibody



PACO02070

Product Information

Size:

50ug

Reactivity:

Human

Source:

Rabbit

Isotype:

IgG

Applications:

ELISA, WB

Recommended dilutions:

WB:1:500-1:2000

Protein Background:**Gene ID:**

SLC22A6

Uniprot

Q4U2R8

Synonyms:

SLC22A6; OAT1; PAHT; Solute carrier family 22 member 6; Organic anion transporter 1; hOAT1; PAH transporter; hPAHT; Renal organic anion transporter 1; hROAT1

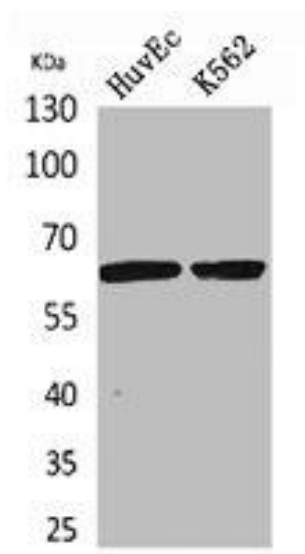
Immunogen:

Synthesized peptide derived from the N-terminal region of human OAT1.

Storage:

Liquid in PBS containing 50% glycerol, 0.5% BSA and 0.02% sodium azide.

Product Images



Western Blot analysis of HuvEc, K562 cells using OAT1 Polyclonal Antibody.