

SLC2A5 Antibody



PACO02074

Product Information

Size:

50ug

Reactivity:

Human

Source:

Rabbit

Isotype:

IgG

Applications:

ELISA, WB

Recommended dilutions:

WB:1:500-1:2000

Protein Background:**Gene ID:**

SLC2A5

Uniprot

P22732

Synonyms:

SLC2A5; GLUT5; Solute carrier family 2, facilitated glucose transporter member 5; Fructose transporter; Glucose transporter type 5, small intestine; GLUT-5

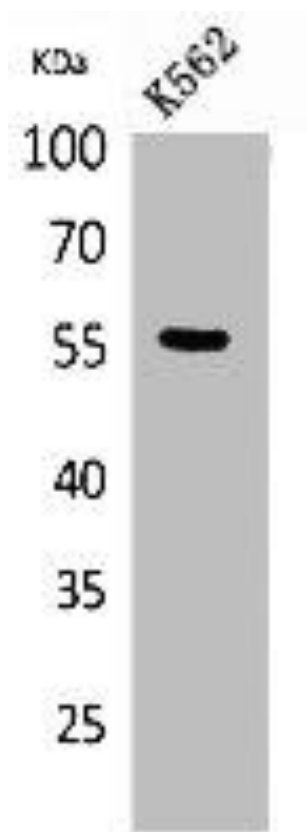
Immunogen:

Synthesized peptide derived from the N-terminal region of human Glut5.

Storage:

Liquid in PBS containing 50% glycerol, 0.5% BSA and 0.02% sodium azide.

Product Images



Western Blot analysis of K562 cells using Glut5 Polyclonal Antibody.