

# ALCAM Antibody



PACO02082

---

## Product Information

**Size:**

50ug

**Reactivity:**

Human, Mouse, Rat

**Source:**

Rabbit

**Isotype:**

IgG

**Applications:**

ELISA, WB

**Recommended dilutions:**

WB:1:500-1:2000

**Protein Background:**

**Gene ID:**

ALCAM

**Uniprot**

Q13740

**Synonyms:**

ALCAM; MEMD; CD166 antigen; Activated leukocyte cell adhesion molecule; CD166

**Immunogen:**

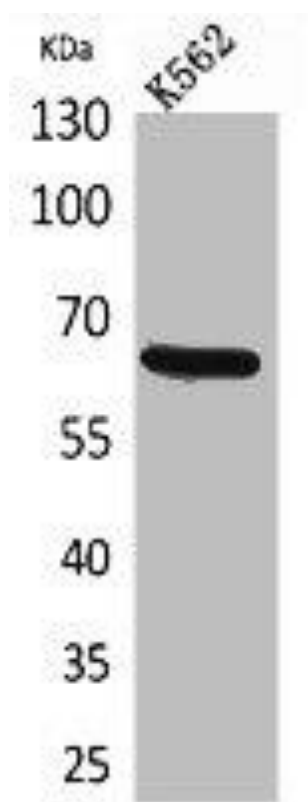
Synthesized peptide derived from the C-terminal region of human CD166.

**Storage:**

Liquid in PBS containing 50% glycerol, 0.5% BSA and 0.02% sodium azide.

## Product Images

---



Western Blot analysis of K562 cells using CD166 Polyclonal Antibody.