

# JAG1 Antibody



PACO02087

---

## Product Information

**Size:**

50ug

**Reactivity:**

Human, Mouse, Rat

**Source:**

Rabbit

**Isotype:**

IgG

**Applications:**

ELISA, WB

**Recommended dilutions:**

WB:1:500-1:2000

**Protein Background:**

**Gene ID:**

JAG1

**Uniprot**

P78504

**Synonyms:**

JAG1; JAGL1; Protein jagged-1; Jagged1; hJ1; CD339

**Immunogen:**

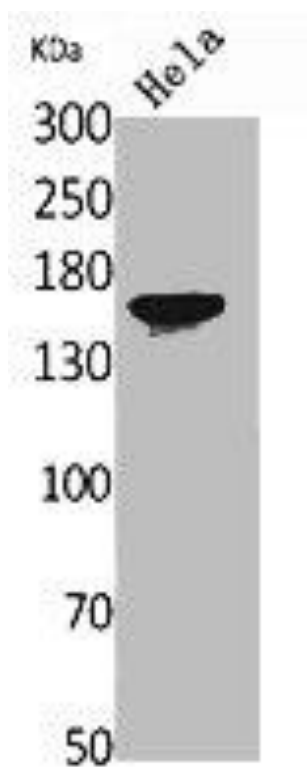
Synthesized peptide derived from the Internal region of human Jagged1.

**Storage:**

Liquid in PBS containing 50% glycerol, 0.5% BSA and 0.02% sodium azide.

## Product Images

---



Western Blot analysis of HeLa cells using Jagged1 Polyclonal Antibody.