

IFNW1 Antibody



PACO2100

Product Information

Size:

50ug

Reactivity:

Human

Source:

Rabbit

Isotype:

IgG

Applications:

ELISA, WB

Recommended dilutions:

WB:1:500-1:2000

Protein Background:

Gene ID:

IFNW1

Uniprot

P05000

Synonyms:

IFNW1; Interferon omega-1; Interferon alpha-II-1

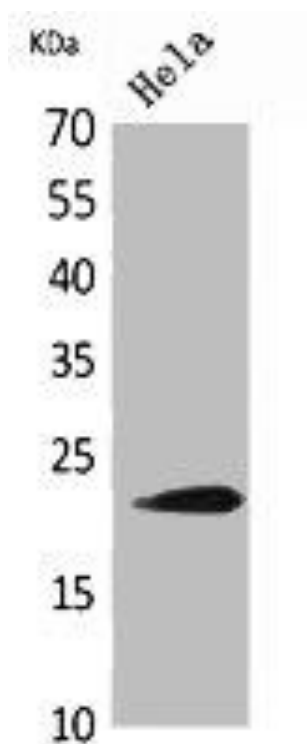
Immunogen:

Synthesized peptide derived from the C-terminal region of human IFN-Omega.

Storage:

Liquid in PBS containing 50% glycerol, 0.5% BSA and 0.02% sodium azide.

Product Images



Western Blot analysis of HeLa cells using IFN- Polyclonal Antibody.