

# FGF16 Antibody



PACO02117

---

## Product Information

**Size:**

50ug

**Reactivity:**

Human, Mouse, Rat

**Source:**

Rabbit

**Isotype:**

IgG

**Applications:**

ELISA, WB

**Recommended dilutions:**

WB:1:500-1:2000

**Protein Background:****Gene ID:**

FGF16

**Uniprot**

O43320

**Synonyms:**

FGF16; Fibroblast growth factor 16; FGF-16

**Immunogen:**

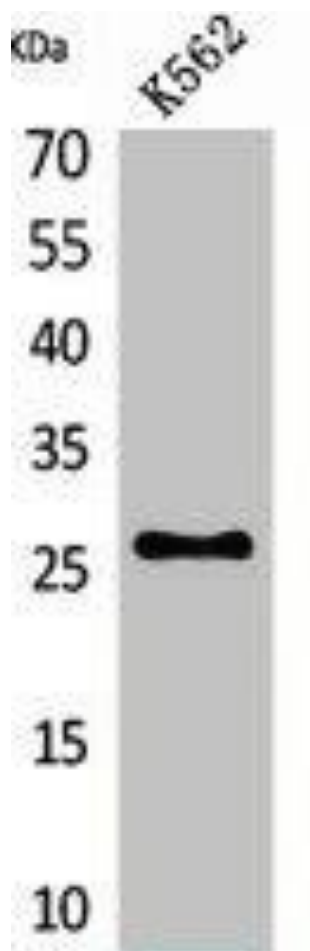
Synthesized peptide derived from the Internal region of human FGF-16.

**Storage:**

Liquid in PBS containing 50% glycerol, 0.5% BSA and 0.02% sodium azide.

## Product Images

---



Western Blot analysis of K562 cells using FGF-16 Polyclonal Antibody.