

# CD200 Antibody



PACO02149

---

## Product Information

**Size:**

50ug

**Reactivity:**

Human

**Source:**

Rabbit

**Isotype:**

IgG

**Applications:**

ELISA, WB

**Recommended dilutions:**

WB:1:500-1:2000

**Protein Background:**

**Gene ID:**

CD200

**Uniprot**

P41217

**Synonyms:**

CD200; MOX1; MOX2; My033; OX-2 membrane glycoprotein; CD200

**Immunogen:**

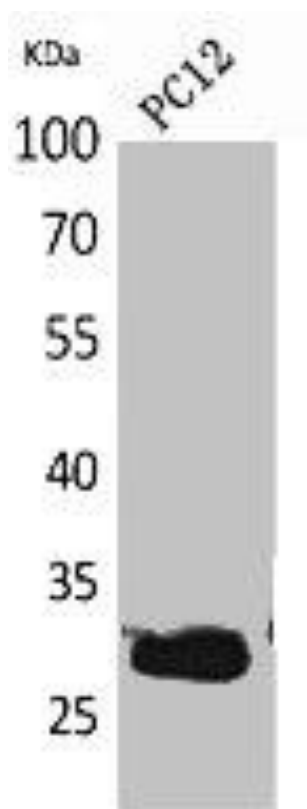
Synthesized peptide derived from the Internal region of human CD200.

**Storage:**

Liquid in PBS containing 50% glycerol, 0.5% BSA and 0.02% sodium azide.

## Product Images

---



Western Blot analysis of PC12 cells using CD200 Polyclonal Antibody.