

PACO02156

---

## Product Information

**Size:**

50ug

**Reactivity:**

Human

**Source:**

Rabbit

**Isotype:**

IgG

**Applications:**

ELISA, WB

**Recommended dilutions:**

WB:1:500-1:2000

**Protein Background:**

**Gene ID:**

NCR2

**Uniprot**

O95944

**Synonyms:**

NCR2; LY95; Natural cytotoxicity triggering receptor 2; Lymphocyte antigen 95 homolog; NK cell-activating receptor; Natural killer cell p44-related protein; NK-p44; NKp44; CD336

**Immunogen:**

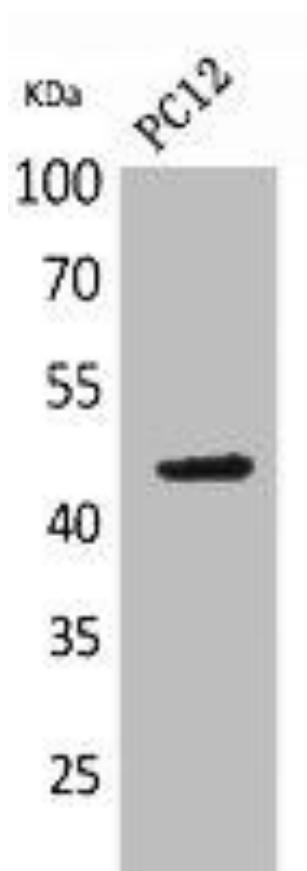
Synthesized peptide derived from the Internal region of human NKp44.

**Storage:**

Liquid in PBS containing 50% glycerol, 0.5% BSA and 0.02% sodium azide.

## Product Images

---



Western Blot analysis of PC-12 cells using NKp44 Polyclonal Antibody.