

CMTM5 Antibody



PACO02160

Product Information

Size:

50ug

Reactivity:

Human

Source:

Rabbit

Isotype:

IgG

Applications:

ELISA, WB

Recommended dilutions:

WB:1:500-1:2000

Protein Background:

Gene ID:

CMTM5

Uniprot

Q96DZ9

Synonyms:

CMTM5; CKLFSF5; CKLF-like MARVEL transmembrane domain-containing protein 5; Chemokine-like factor superfamily member 5

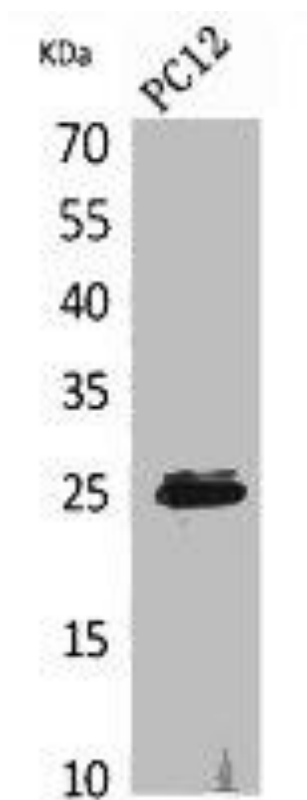
Immunogen:

Synthesized peptide derived from the N-terminal region of human CMTM5.

Storage:

Liquid in PBS containing 50% glycerol, 0.5% BSA and 0.02% sodium azide.

Product Images



Western Blot analysis of PC12 cells using CMTM5 Polyclonal Antibody.