

TMEM173 Antibody



PACO02163

Product Information

Size:

50ug

Reactivity:

Human, Mouse

Source:

Rabbit

Isotype:

IgG

Applications:

ELISA, WB

Recommended dilutions:

WB:1:500-1:2000

Protein Background:**Gene ID:**

TMEM173

Uniprot

Q86WV6

Synonyms:

TMEM173; ERIS; MITA; STING; Transmembrane protein 173; Endoplasmic reticulum interferon stimulator; ERIS; Mediator of IRF3 activation; hMITA; Stimulator of interferon genes protein; hSTING

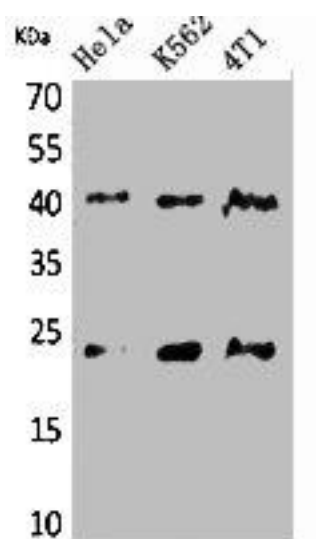
Immunogen:

Synthesized peptide derived from the C-terminal region of human TMEM173.

Storage:

Liquid in PBS containing 50% glycerol, 0.5% BSA and 0.02% sodium azide.

Product Images



Western Blot analysis of HeLa, K562, 4T1 cells using TMEM173 Polyclonal Antibody.