

PACO02171

Product Information

Size:

50ug

Reactivity:

Human

Source:

Rabbit

Isotype:

IgG

Applications:

ELISA, WB

Recommended dilutions:

WB:1:500-1:2000

Protein Background:**Gene ID:**

SRY

Uniprot

Q05066

Synonyms:

SRY; TDF; Sex-determining region Y protein; Testis-determining factor

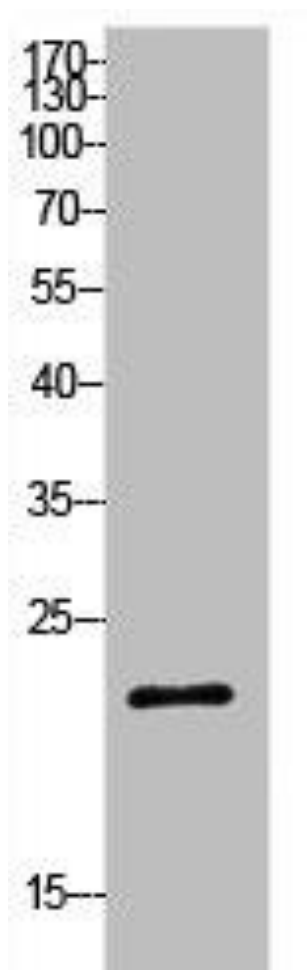
Immunogen:

Synthesized peptide derived from the Internal region of human SRY.

Storage:

Liquid in PBS containing 50% glycerol, 0.5% BSA and 0.02% sodium azide.

Product Images



Western Blot analysis of HeLa cells using SRY Polyclonal Antibody.