

# Histone H2A Antibody



PACO02174

---

## Product Information

**Size:**

50ug

**Reactivity:**

Human, Mouse, Rat

**Source:**

Rabbit

**Isotype:**

IgG

**Applications:**

ELISA, WB

**Recommended dilutions:**

WB:1:500-1:2000

**Protein Background:**

**Gene ID:**

HIST1H2AG

**Uniprot**

P0C0S8

**Synonyms:**

HIST1H2AG; H2AFP; HIST1H2AI; H2AFC; HIST1H2AK; H2AFD; HIST1H2AL; H2AFI; HIST1H2AM; H2AFN; Histone H2A type 1; H2A.1; Histone H2A/p

**Immunogen:**

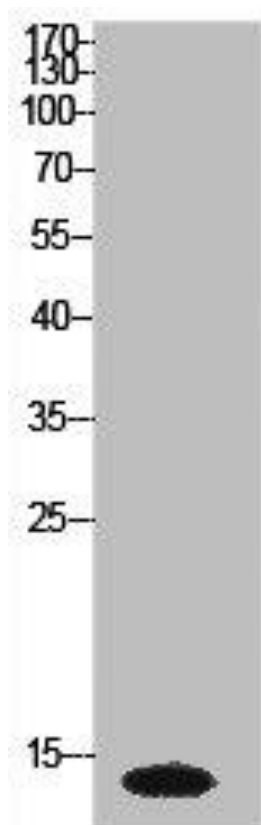
Synthesized peptide derived from the Internal region of human Histone H2A.

**Storage:**

Liquid in PBS containing 50% glycerol, 0.5% BSA and 0.02% sodium azide.

## Product Images

---



Western Blot analysis of HeLa cells using Histone H2A Polyclonal Antibody.