

PACO02175

---

## Product Information

**Size:**

50ug

**Reactivity:**

Human, Mouse, Rat

**Source:**

Rabbit

**Isotype:**

IgG

**Applications:**

ELISA, WB

**Recommended dilutions:**

WB:1:500-1:2000

**Protein Background:****Gene ID:**

HIST1H2BB/HIST1H2BC/HIST1H2BD/HIST1H2BH/HIST1H2BJ/HIST1H2BK/HIST1H2BL/HIST1H2BM/HIST1H2BN/HIST1H2BO

**Uniprot**

P33778/P62807/P58876/Q93079/P06899/O60814/Q99880/Q99879/Q99877/P23527

**Synonyms:**

HIST1H2BB; H2BFF; Histone H2B type 1-B; Histone H2B.1; Histone H2B. f; H2B/f; HIST1H2BC; H2BFL; HIST1H2BE; H2BFH; HIST1H2BF; H2BFG; HIST1H2BG; H2BFA; HIST1H2BI; H2BFK; Histone H2B type 1-C/E/F/G/I; Histone H2B.1 A; Histone H2B. a; H2B/a;

**Immunogen:**

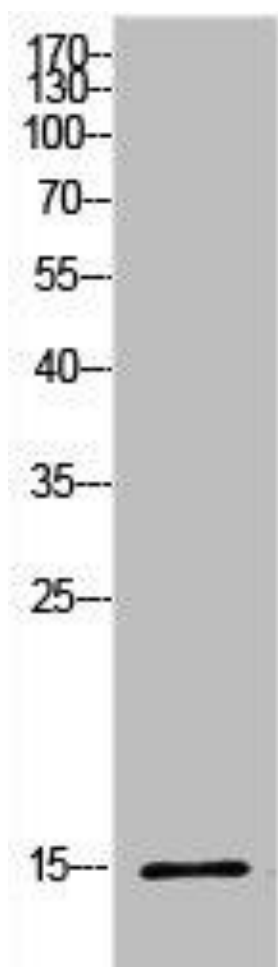
Synthesized peptide derived from the Internal region of human Histone H2B.

**Storage:**

Liquid in PBS containing 50% glycerol, 0.5% BSA and 0.02% sodium azide.

## Product Images

---



Western Blot analysis of HeLa cells using Histone H2B Polyclonal Antibody.