

IGFBP3 Antibody



PACO02186

Product Information

Size:

50ug

Reactivity:

Human, Mouse, Rat

Source:

Rabbit

Isotype:

IgG

Applications:

ELISA, WB

Recommended dilutions:

WB:1:500-1:2000

Protein Background:

Gene ID:

IGFBP3

Uniprot

P17936

Synonyms:

IGFBP3; IBP3; Insulin-like growth factor-binding protein 3; IBP-3; IGF-binding protein 3; IGFBP-3

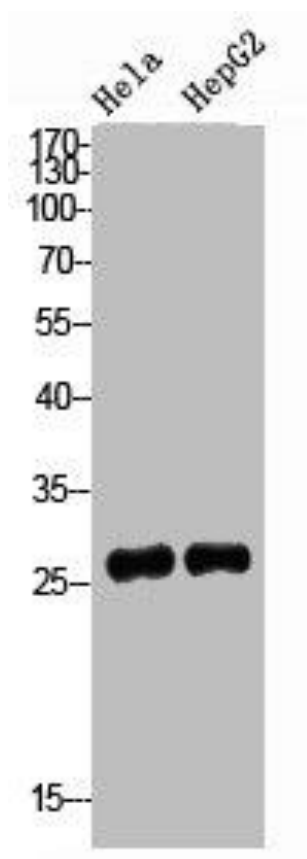
Immunogen:

Synthesized peptide derived from the Internal region of human IGFBP3.

Storage:

Liquid in PBS containing 50% glycerol, 0.5% BSA and 0.02% sodium azide.

Product Images



Western Blot analysis of HeLa HepG2 cells using IGFBP3 Polyclonal Antibody.