

COL5A2 Antibody



PACO02200

Product Information

Size:

50ug

Reactivity:

Human

Source:

Rabbit

Isotype:

IgG

Applications:

ELISA, WB

Recommended dilutions:

WB:1:500-1:2000

Protein Background:

Gene ID:

COL5A2

Uniprot

P05997

Synonyms:

COL5A2; Collagen alpha-2(V) chain

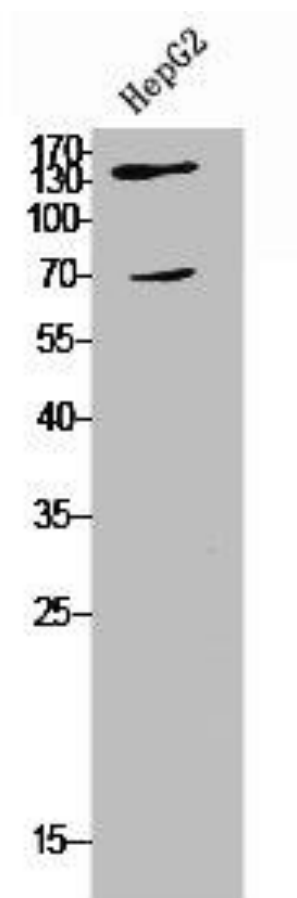
Immunogen:

Synthesized peptide derived from the N-terminal region of human COL5A2.

Storage:

Liquid in PBS containing 50% glycerol, 0.5% BSA and 0.02% sodium azide.

Product Images



Western Blot analysis of HepG2 cells using COL5A2 Polyclonal Antibody.