

# ANG Antibody



PACO02209

---

## Product Information

**Size:**

50ug

**Reactivity:**

Human

**Source:**

Rabbit

**Isotype:**

IgG

**Applications:**

ELISA, WB

**Recommended dilutions:**

WB:1:500-1:2000

**Protein Background:**

**Gene ID:**

ANG

**Uniprot**

P03950

**Synonyms:**

ANG; RNASE5; Angiogenin; Ribonuclease 5; RNase 5

**Immunogen:**

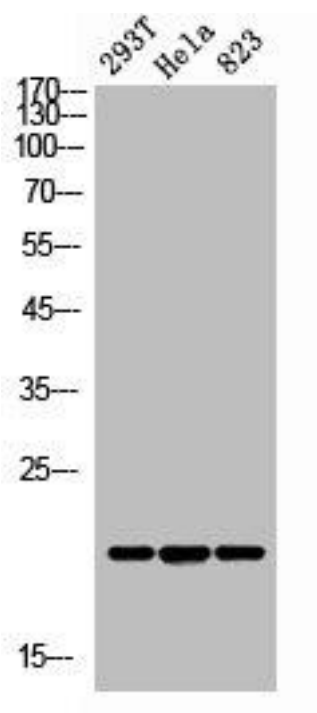
Synthesized peptide derived from the N-terminal region of human ANG I.

**Storage:**

Liquid in PBS containing 50% glycerol, 0.5% BSA and 0.02% sodium azide.

## Product Images

---



Western Blot analysis of 293T HeLa 823 cells using ANG I Polyclonal Antibody.