

# FGF17 Antibody



PACO02219

---

## Product Information

**Size:**

50ug

**Reactivity:**

Human

**Source:**

Rabbit

**Isotype:**

IgG

**Applications:**

ELISA, WB

**Recommended dilutions:**

WB:1:500-1:2000

**Protein Background:**

**Gene ID:**

FGF17

**Uniprot**

O60258

**Synonyms:**

FGF17; Fibroblast growth factor 17; FGF-17

**Immunogen:**

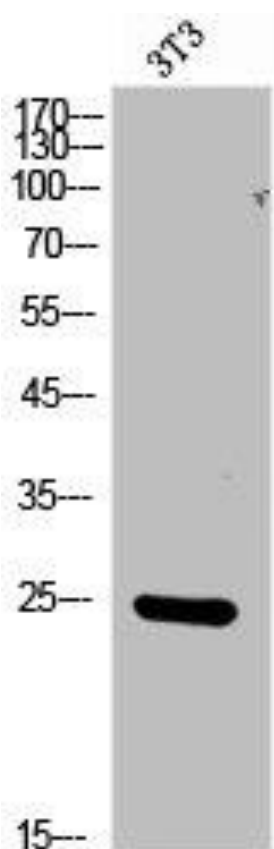
Synthesized peptide derived from the C-terminal region of human FGF-17.

**Storage:**

Liquid in PBS containing 50% glycerol, 0.5% BSA and 0.02% sodium azide.

## Product Images

---



Western Blot analysis of NIH-3T3 cells using FGF-17 Polyclonal Antibody.