

DKK1 Antibody



PACO02227

Product Information

Size:

50ug

Reactivity:

Human, Mouse, Rat

Source:

Rabbit

Isotype:

IgG

Applications:

ELISA, WB

Recommended dilutions:

WB:1:500-1:2000

Protein Background:

Gene ID:

DKK1

Uniprot

O94907

Synonyms:

DKK1; Dickkopf-related protein 1; Dickkopf-1; Dkk-1; hDkk-1; SK

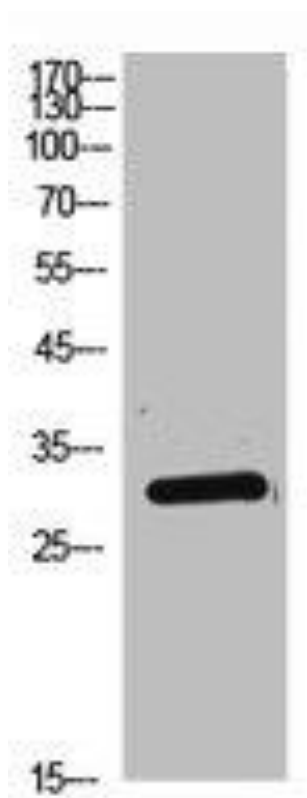
Immunogen:

Synthesized peptide derived from the C-terminal region of human Dkk-1.

Storage:

Liquid in PBS containing 50% glycerol, 0.5% BSA and 0.02% sodium azide.

Product Images



Western Blot analysis of HeLa cells using Dkk-1 Polyclonal Antibody.