

GHR Antibody



PACO02238

Product Information

Size:

50ug

Reactivity:

Human, Mouse, Rat

Source:

Rabbit

Isotype:

IgG

Applications:

ELISA, WB

Recommended dilutions:

WB:1:500-1:2000

Protein Background:

Gene ID:

GHR

Uniprot

P10912

Synonyms:

GHR; Growth hormone receptor; GH receptor; Somatotropin receptor

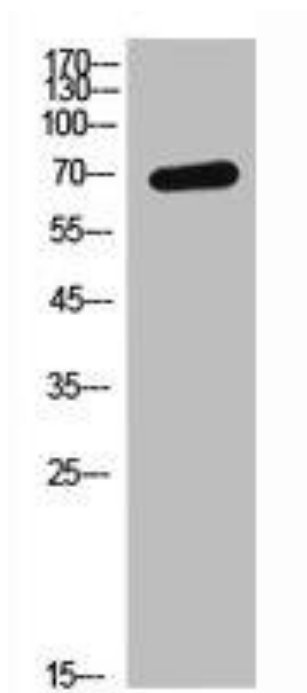
Immunogen:

Synthesized peptide derived from the N-terminal region of human GHR.

Storage:

Liquid in PBS containing 50% glycerol, 0.5% BSA and 0.02% sodium azide.

Product Images



Western Blot analysis of SKOV3 cells using GHR Polyclonal Antibody.