

GP5 Antibody



PACO02249

Product Information

Size:

50ug

Reactivity:

Human, Mouse, Rat

Source:

Rabbit

Isotype:

IgG

Applications:

ELISA, WB

Recommended dilutions:

WB:1:500-1:2000

Protein Background:

Gene ID:

GP5

Uniprot

P40197

Synonyms:

GP5; Platelet glycoprotein V; GPV; Glycoprotein 5; CD42d

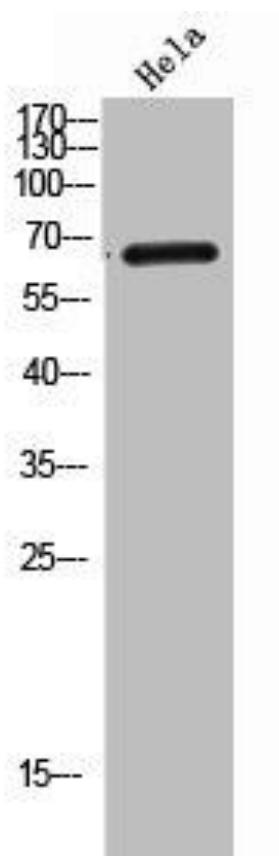
Immunogen:

Synthesized peptide derived from the Internal region of human CD42d.

Storage:

Liquid in PBS containing 50% glycerol, 0.5% BSA and 0.02% sodium azide.

Product Images



Western Blot analysis of HeLa cells using CD42d Polyclonal Antibody.