

# SDC1 Antibody



PACO02259

---

## Product Information

**Size:**

50ug

**Reactivity:**

Human

**Source:**

Rabbit

**Isotype:**

IgG

**Applications:**

ELISA, WB

**Recommended dilutions:**

WB:1:500-1:2000

**Protein Background:**

**Gene ID:**

SDC1

**Uniprot**

P18827

**Synonyms:**

SDC1; SDC; Syndecan-1; SYND1; CD138

**Immunogen:**

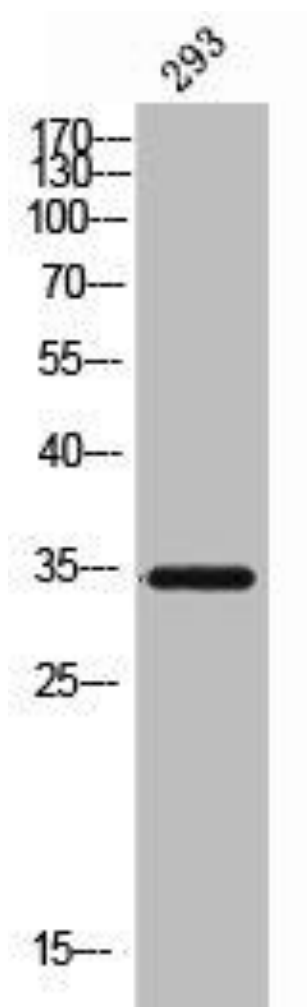
Synthesized peptide derived from the Internal region of human CD138.

**Storage:**

Liquid in PBS containing 50% glycerol, 0.5% BSA and 0.02% sodium azide.

## Product Images

---



Western Blot analysis of 293 cells using CD138 Polyclonal Antibody.