

# BMP15 Antibody



PACO02270

---

## Product Information

**Size:**

50ug

**Reactivity:**

Human

**Source:**

Rabbit

**Isotype:**

IgG

**Applications:**

ELISA, WB

**Recommended dilutions:**

WB:1:500-1:2000

**Protein Background:**

**Gene ID:**

BMP15

**Uniprot**

O95972

**Synonyms:**

BMP15; GDF9B; Bone morphogenetic protein 15; BMP-15; Growth/differentiation factor 9B; GDF-9B

**Immunogen:**

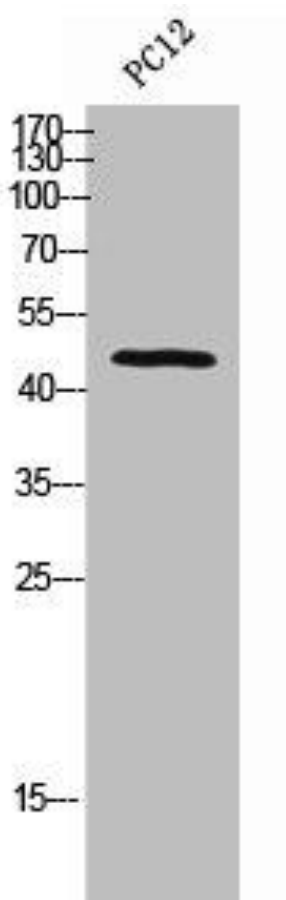
Synthesized peptide derived from the Internal region of human BMP-15.

**Storage:**

Liquid in PBS containing 50% glycerol, 0.5% BSA and 0.02% sodium azide.

## Product Images

---



Western Blot analysis of PC-12 cells using BMP-15 Polyclonal Antibody.