

Phospho-TH (S8) Antibody



PACO02276

Product Information

Size:

50ug

Reactivity:

Rat

Source:

Rabbit

Isotype:

IgG

Applications:

ELISA, WB, IHC

Recommended dilutions:

WB:1:500-1:2000, IHC:1:100-1:300

Protein Background:

Gene ID:

TH

Uniprot

P07101

Synonyms:

TH; TYH; Tyrosine 3-monooxygenase; Tyrosine 3-hydroxylase; TH

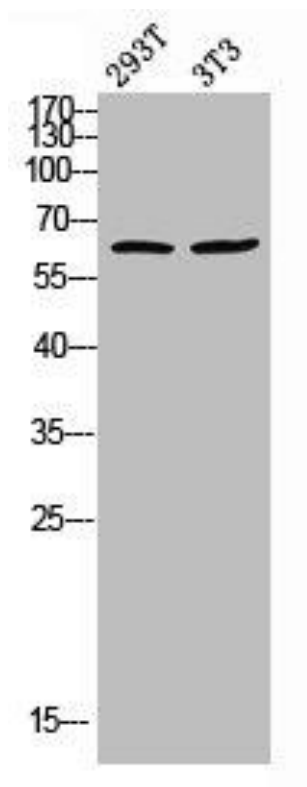
Immunogen:

Synthesized peptide derived from human TH around the phosphorylation site of S8.

Storage:

Liquid in PBS containing 50% glycerol, 0.5% BSA and 0.02% sodium azide.

Product Images



Western blot analysis of 293T 3T3 lysis using Phospho-TH (S8) antibody.