

# Phospho-HDAC6 (S22) Antibody



PACO02285

---

## Product Information

**Size:**

50ug

**Reactivity:**

Human, Mouse

**Source:**

Rabbit

**Isotype:**

IgG

**Applications:**

ELISA, WB, IHC, IF

**Recommended dilutions:**

WB:1:500-1:2000, IHC:1:100-1:300,  
IF:1:200-1:1000

**Protein Background:****Gene ID:**

HDAC6

**Uniprot**

Q9UBN7

**Synonyms:**

HDAC6; KIAA0901; JM21; Histone deacetylase 6; HD6

**Immunogen:**

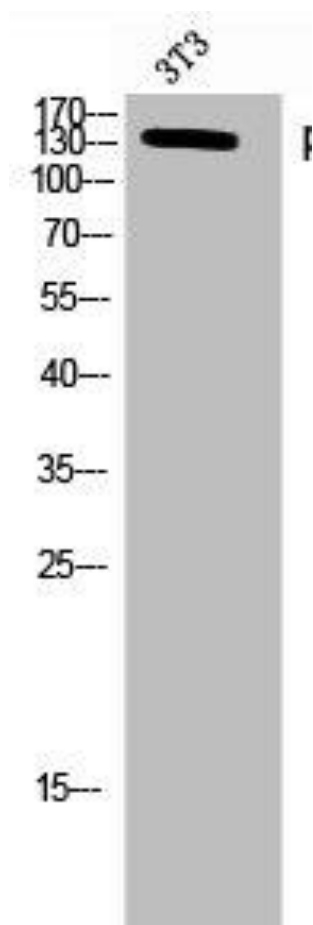
Synthesized peptide derived from human HDAC6 around the phosphorylation site of S22.

**Storage:**

Liquid in PBS containing 50% glycerol, 0.5% BSA and 0.02% sodium azide.

## Product Images

---



Western Blot analysis of 3T3 cells using Phospho-HDAC6 (S22) Polyclonal Antibody.