

PARP2 Antibody



PACO02288

Product Information

Size:

50ug

Reactivity:

Human, Mouse

Source:

Rabbit

Isotype:

IgG

Applications:

ELISA, WB

Recommended dilutions:

WB:1:500-1:2000

Protein Background:

Gene ID:

PARP2

Uniprot

Q9UGN5

Synonyms:

PARP2; ADPRT2; ADPRTL2; Poly [ADP-ribose] polymerase 2; PARP-2; hPARP-2; ADP-riboseyltransferase diphtheria toxin-like 2; ARTD2; NAD(+) ADP-riboseyltransferase 2; ADPRT-2; Poly[ADP-ribose] synthase 2; pADPRT-2

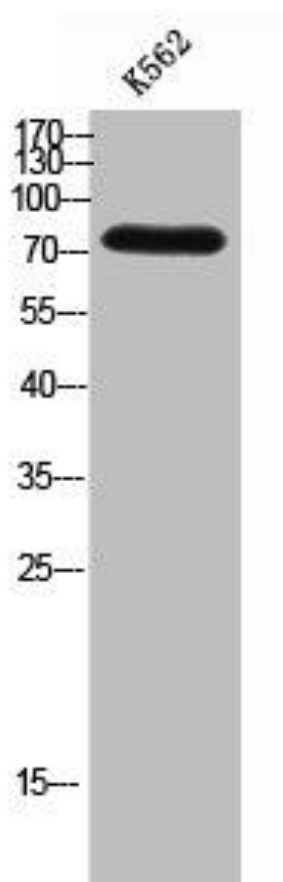
Immunogen:

Synthesized peptide derived from the Internal region of human PARP-2.

Storage:

Liquid in PBS containing 50% glycerol, 0.5% BSA and 0.02% sodium azide.

Product Images



Western Blot analysis of K562 cells using PARP-2 Polyclonal Antibody.