

KCNK7 Antibody



PACO02293

Product Information

Size:

50ug

Reactivity:

Human

Source:

Rabbit

Isotype:

IgG

Applications:

ELISA, WB

Recommended dilutions:

WB:1:500-1:2000

Protein Background:

Gene ID:

KCNK7

Uniprot

Q9Y2U2

Synonyms:

KCNK7; Potassium channel subfamily K member 7

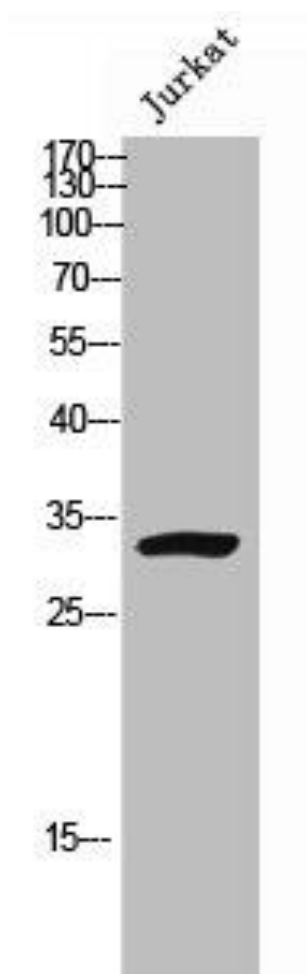
Immunogen:

Synthesized peptide derived from the C-terminal region of human TWIK-3.

Storage:

Liquid in PBS containing 50% glycerol, 0.5% BSA and 0.02% sodium azide.

Product Images



Western Blot analysis of JK cells using TWIK-3 Polyclonal Antibody.