

Phospho-KIF20A (S528) Antibody



PACO02295

Product Information

Size:

50ug

Reactivity:

Human

Source:

Rabbit

Isotype:

IgG

Applications:

ELISA, WB, IHC

Recommended dilutions:

WB:1:500-1:2000, IHC:1:100-1:300

Protein Background:**Gene ID:**

KIF20A

Uniprot

O95235

Synonyms:

KIF20A; MKLP2; RAB6KIFL; Kinesin-like protein KIF20A; GG10_2; Mitotic kinesin-like protein 2; MKlp2; Rab6-interacting kinesin-like protein; Rabkinesin-6

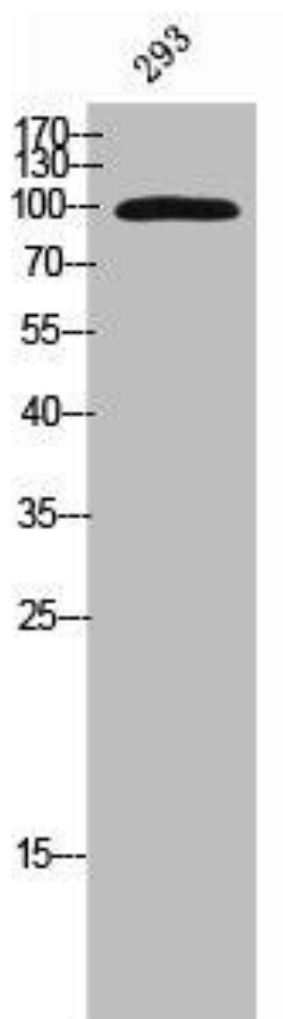
Immunogen:

Synthesized peptide derived from human KIF20A around the phosphorylation site of S528.

Storage:

Liquid in PBS containing 50% glycerol, 0.5% BSA and 0.02% sodium azide.

Product Images



Western Blot analysis of 293 cells using Phospho-KIF20A (S528) Polyclonal Antibody.