

Phospho-CDK5 (Y15) Antibody



PACO02304

Product Information

Size:

50ug

Reactivity:

Human, Mouse, Rat, Monkey

Source:

Rabbit

Isotype:

IgG

Applications:

ELISA, WB, IHC

Recommended dilutions:

WB:1:500-1:2000, IHC:1:100-1:300

Protein Background:**Gene ID:**

CDK5

Uniprot

Q00535

Synonyms:

CDK5; CDKN5; Cyclin-dependent kinase 5; Cell division protein kinase 5; Serine/threonine-protein kinase PSSALRE; Tau protein kinase II catalytic subunit; TPKII catalytic subunit

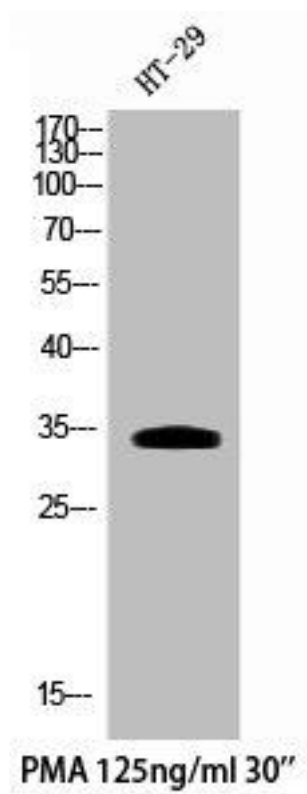
Immunogen:

Synthesized peptide derived from human Cdk5 around the phosphorylation site of Y15.

Storage:

Liquid in PBS containing 50% glycerol, 0.5% BSA and 0.02% sodium azide.

Product Images



Western Blot analysis of HT29+PMA cells using Phospho-Cdk5 (Y15) Polyclonal Antibody.