

CNKSR1 Antibody



PACO02308

Product Information

Size:

50ug

Reactivity:

Human, Mouse, Rat

Source:

Rabbit

Isotype:

IgG

Applications:

ELISA, WB, IHC, IF

Recommended dilutions:

WB:1:500-1:2000, IHC:1:100-1:300,
IF:1:200-1:1000

Protein Background:

Gene ID:

CNKSR1

Uniprot

Q969H4

Synonyms:

CNKSR1; CNK1; Connector enhancer of kinase suppressor of ras 1; Connector enhancer of KSR 1; CNK homolog protein 1; CNK1; hCNK1; Connector enhancer of KSR-like

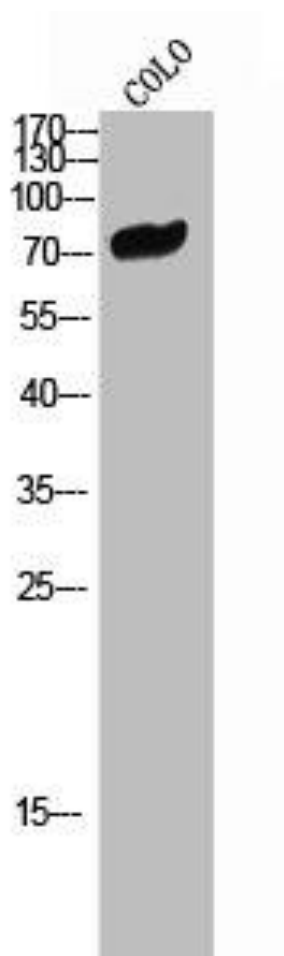
Immunogen:

Synthesized peptide derived from the Internal region of human CNK1.

Storage:

Liquid in PBS containing 50% glycerol, 0.5% BSA and 0.02% sodium azide.

Product Images



Western Blot analysis of COLO cells using CNK1 Polyclonal Antibody.