

PACO02312

Product Information

Size:

50ug

Reactivity:

Human, Mouse

Source:

Rabbit

Isotype:

IgG

Applications:

ELISA, WB, IHC

Recommended dilutions:

WB:1:500-1:2000, IHC:1:100-1:300

Protein Background:**Gene ID:**

CDKN3

Uniprot

Q16667

Synonyms:

CDKN3; CDI1; CIP2; KAP; Cyclin-dependent kinase inhibitor 3; CDK2-associated dual-specificity phosphatase; Cyclin-dependent kinase interactor 1; Cyclin-dependent kinase-interacting protein 2; Kinase-associated phosphatase

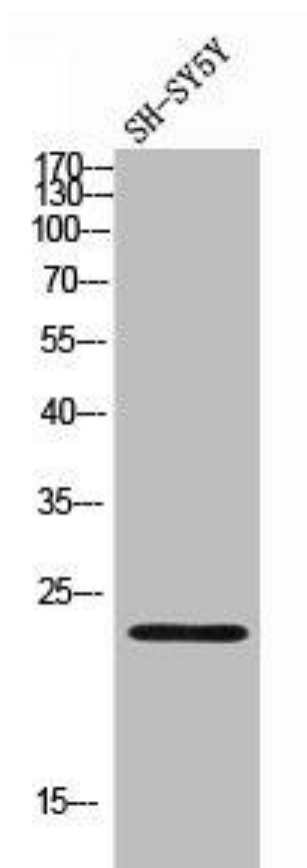
Immunogen:

Synthesized peptide derived from the Internal region of human CDKN3.

Storage:

Liquid in PBS containing 50% glycerol, 0.5% BSA and 0.02% sodium azide.

Product Images



Western Blot analysis of SH-SY5Y cells using CDKN3 Polyclonal Antibody.