

# NDC80 Antibody



PACO02313

---

## Product Information

**Size:**

50ug

**Reactivity:**

Human, Mouse

**Source:**

Rabbit

**Isotype:**

IgG

**Applications:**

ELISA, WB, IF

**Recommended dilutions:**

WB:1:500-1:2000, IF:1:200-1:1000

**Protein Background:****Gene ID:**

NDC80

**Uniprot**

O14777

**Synonyms:**

NDC80; HEC; HEC1; KNTC2; Kinetochore protein NDC80 homolog; Highly expressed in cancer protein; Kinetochore protein Hec1; HsHec1; Kinetochore-associated protein 2; Retinoblastoma-associated protein HEC

**Immunogen:**

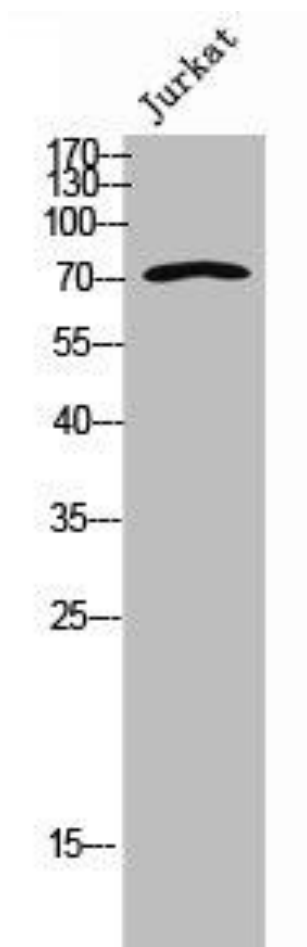
Synthesized peptide derived from the Internal region of human Hec1.

**Storage:**

Liquid in PBS containing 50% glycerol, 0.5% BSA and 0.02% sodium azide.

## Product Images

---



Western Blot analysis of Jurkat cells using Hec1 Polyclonal Antibody.