

# SLC9A6 Antibody



PACO02324

---

## Product Information

**Size:**

50ug

**Reactivity:**

Human, Mouse

**Source:**

Rabbit

**Isotype:**

IgG

**Applications:**

ELISA, WB

**Recommended dilutions:**

WB:1:500-1:2000

**Protein Background:**

**Gene ID:**

SLC9A6

**Uniprot**

Q92581

**Synonyms:**

SLC9A6; KIAA0267; NHE6; Sodium/hydrogen exchanger 6; Na(+)/H(+) exchanger 6; NHE-6; Solute carrier family 9 member 6

**Immunogen:**

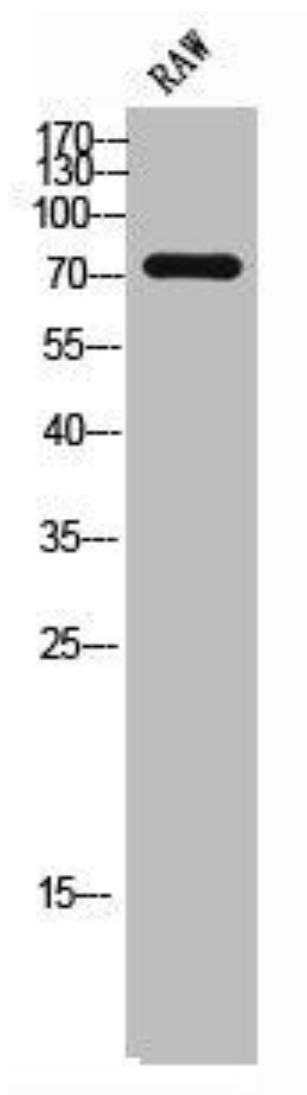
Synthesized peptide derived from the Internal region of human NHE-6.

**Storage:**

Liquid in PBS containing 50% glycerol, 0.5% BSA and 0.02% sodium azide.

## Product Images

---



Western Blot analysis of RAW cells using NHE-6 Polyclonal Antibody.