

SEC23B Antibody



PACO02325

Product Information

Size:

50ug

Reactivity:

Human, Mouse

Source:

Rabbit

Isotype:

IgG

Applications:

ELISA, WB

Recommended dilutions:

WB:1:500-1:2000

Protein Background:

Gene ID:

SEC23B

Uniprot

Q15437

Synonyms:

SEC23B; Protein transport protein Sec23B; SEC23-related protein B

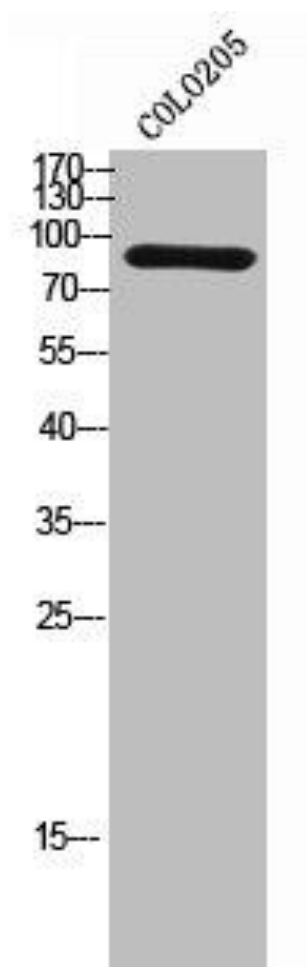
Immunogen:

Synthesized peptide derived from the Internal region of human Sec23B.

Storage:

Liquid in PBS containing 50% glycerol, 0.5% BSA and 0.02% sodium azide.

Product Images



Western Blot analysis of COLO205 cells using Sec23B Polyclonal Antibody.