

KAT5 Antibody



PACO02332

Product Information

Size:

50ug

Reactivity:

Human, Mouse, Rat

Source:

Rabbit

Isotype:

IgG

Applications:

ELISA, WB

Recommended dilutions:

WB:1:500-1:2000

Protein Background:**Gene ID:**

KAT5

Uniprot

Q92993

Synonyms:

KAT5; HTATIP; TIP60; Histone acetyltransferase KAT5; 60 kDa Tat-interactive protein; Tip60; Histone acetyltransferase HTATIP; HIV-1 Tat interactive protein; Lysine acetyltransferase 5; cPLA(2)-interacting protein

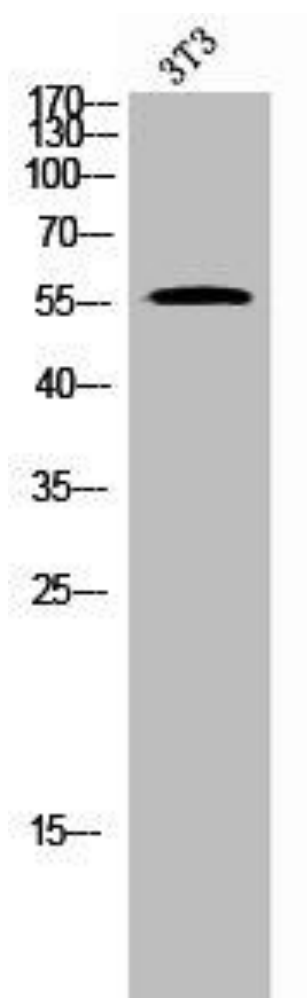
Immunogen:

Synthesized peptide derived from human TIP60 around the non-phosphorylation site of S90.

Storage:

Liquid in PBS containing 50% glycerol, 0.5% BSA and 0.02% sodium azide.

Product Images



Western Blot analysis of 3T3 cells using TIP60 Polyclonal Antibody.