

USP16 Antibody



PACO02340

Product Information

Size:

50ug

Reactivity:

Human, Mouse, Rat

Source:

Rabbit

Isotype:

IgG

Applications:

ELISA, WB

Recommended dilutions:

WB:1:500-1:2000

Protein Background:**Gene ID:**

USP16

Uniprot

Q9Y5T5

Synonyms:

USP16; MSTP039; Ubiquitin carboxyl-terminal hydrolase 16; Deubiquitinating enzyme 16; Ubiquitin thioesterase 16; Ubiquitin-processing protease UBP-M; Ubiquitin-specific-processing protease 16

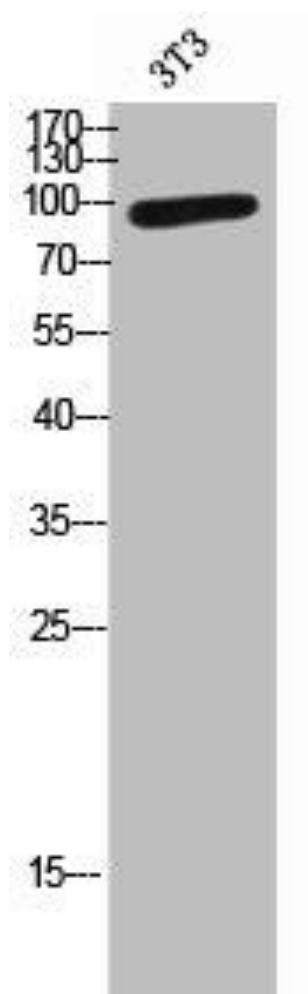
Immunogen:

Synthesized peptide derived from the Internal region of human USP16.

Storage:

Liquid in PBS containing 50% glycerol, 0.5% BSA and 0.02% sodium azide.

Product Images



Western Blot analysis of 3T3 cells using USP16 Polyclonal Antibody.