

# TRIM3 Antibody



PACO02345

---

## Product Information

**Size:**

50ug

**Reactivity:**

Human, Mouse, Rat

**Source:**

Rabbit

**Isotype:**

IgG

**Applications:**

ELISA, WB, IHC, IF

**Recommended dilutions:**

WB:1:500-1:2000, IHC:1:100-1:300,  
IF:1:200-1:1000

**Protein Background:****Gene ID:**

TRIM3

**Uniprot**

O75382

**Synonyms:**

TRIM3; BERP; RNF22; RNF97; Tripartite motif-containing protein 3; Brain-expressed RING finger protein; RING finger protein 22; RING finger protein 97

**Immunogen:**

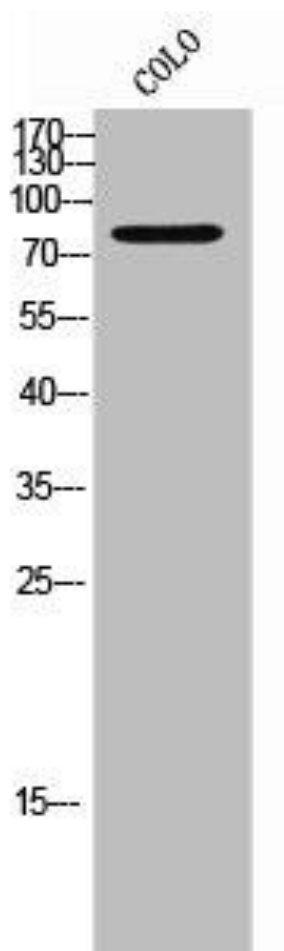
Synthesized peptide derived from the N-terminal region of human TRIM3.

**Storage:**

Liquid in PBS containing 50% glycerol, 0.5% BSA and 0.02% sodium azide.

## Product Images

---



Western Blot analysis of COLO cells using TRIM3 Polyclonal Antibody.