

POLD3 Antibody



PACO02357

Product Information

Size:

50ug

Reactivity:

Human, Mouse, Rat

Source:

Rabbit

Isotype:

IgG

Applications:

ELISA, WB

Recommended dilutions:

WB:1:500-1:2000

Protein Background:**Gene ID:**

POLD3

Uniprot

Q15054

Synonyms:

POLD3; KIAA0039; DNA polymerase delta subunit 3; DNA polymerase delta subunit p66

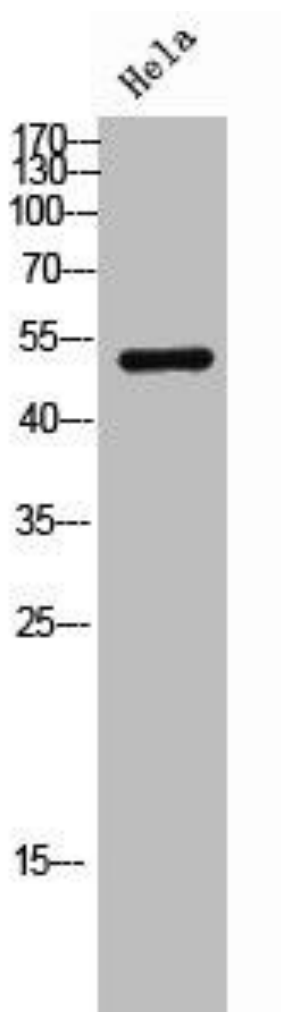
Immunogen:

Synthesized peptide derived from the C-terminal region of human DNA pol delta3.

Storage:

Liquid in PBS containing 50% glycerol, 0.5% BSA and 0.02% sodium azide.

Product Images



Western Blot analysis of hela cells using DNA POLL elta3 Polyclonal Antibody.